

BRAZIL SENSATIONS

PRAIA DA PIPA MODULE

4 Days / 3 Night

2025



CREATING EMOTIONS



Brazil Sensations a 100% green DMC

Brazil Sensations is the first Brazilian DMC to engage itself in the carbon offset of its activities.

Besides our daily gestures to minimize our impact to our planet, Brazil Sensations decided not only to be ecological and socially sustainable, but as well to reinforce the regenerative tourism.

Following a long expertise by Agroforestry Carbon, our CO2 emissions are compensated in the form of contribution to certified projects in Brazil.

In line with the UN's Sustainable Development Goals (SDGs), our actions are concentrated in reforestation, preserving forests and its biodiversity as well as renewable energy sources whilst assuring the protection of vulnerable local populations.

These days, it has become difficult to ignore the impact that our tourism projects in Brazil can have to the environment. It is in this context that Brazil Sensations offers the possibility of a solution to every project such as to propose a carbon compensation of each and every journey to our beloved country.



ENVIRONMENTAL IMPACT

- Recovery of degraded zones
- Increase in biological carbon sequestration
- Increase in the quality of the soil
- Source water protection
- Increase in biodiversity
- Increase in the area 's productivity

SOCIAL IMPACT

- Diversification of cultures and productions
- Generation of a resilient economy
- Assuring food security
- Reinforcement of local productions
- Foods with higher nutritional value
- Better quality of life to farmers



IF YOU SEE THIS SYMBOL

It means that the chose service provider applies a conscious development vision and policy, aiming to give a positive impact to society and to respect the environment.

BRAZIL SENSATIONS works in priority with these suppliers.

BRAZIL SENSATIONS

ITINERARY

DAY 1: IN / PRAIA DE PIPA

DAY 2: PRAIA DE PIPA

DAY 3: PRAIA DE PIPA

DAY 4: PRAIA DE PIPA / OUT



TRAVELING IS AS EXPERIENCE

BRAZIL IN A FEW NUMBERS



Area: 3.2 million square miles (almost the same size as US – 3.8 million square miles)

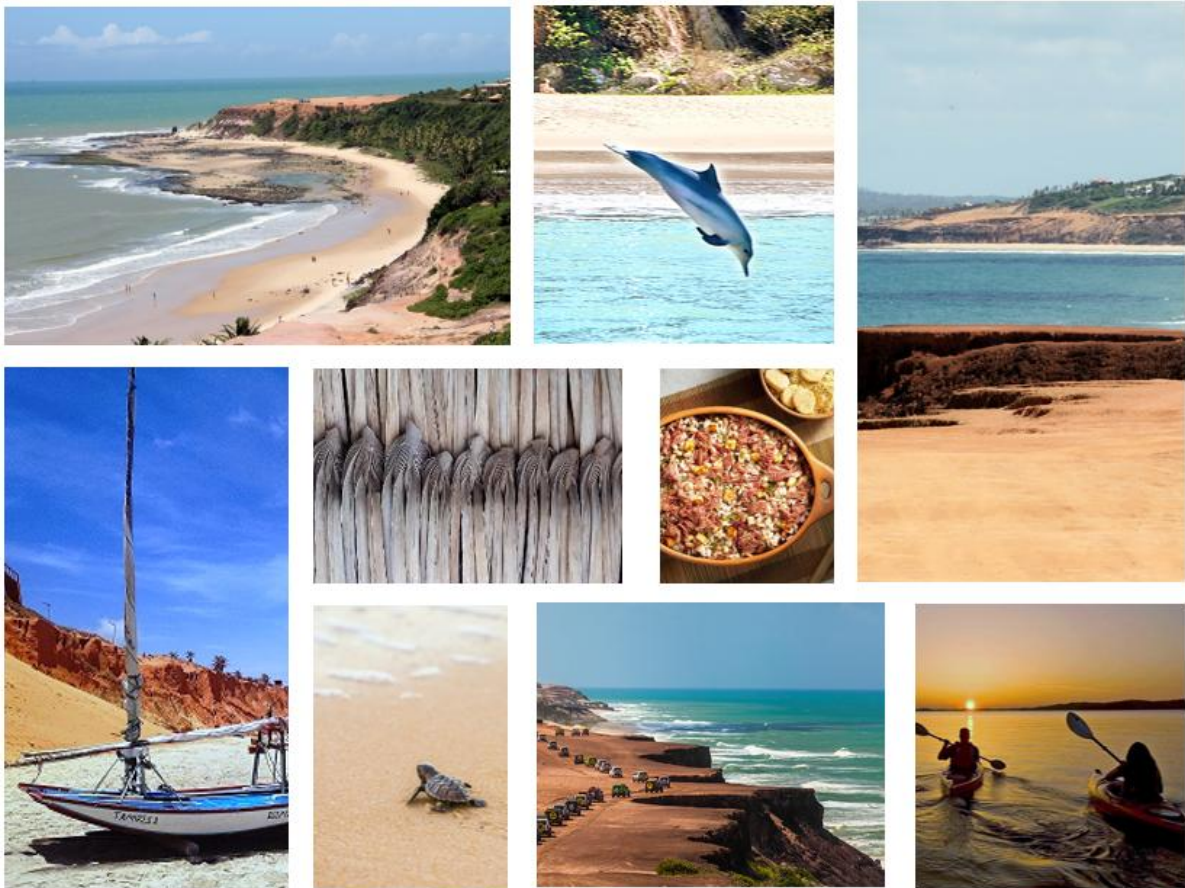
Population: 209 million inhabitants with a density of 64.7/square miles (the US has a density of 87/square miles), 84% of its population lives in urban areas and 40% of Brazilians live in cities

Economy: Brazil is the largest economy in Latin America but also the world's 8th largest GDP (Gross Domestic Product).

Official language: Brazilian Portuguese

PRAIA DE PIPA

Approximately 80 km from the capital Natal, Pipa Beach is known for its extensive beaches, including Love Beach (named for its heart shape seen from the cliffs), Central Beach (with very calm waters), Dolphins Beach (where you can swim with dolphins near the shore), and Madeiro Beach (very quiet with many palm trees, the northernmost). The variety of beaches makes Pipa the ideal place to practice different water sports.



PRAIA DE PIPA SUGGESTED HOTELS



HOTEL SUN BAY or similar *3* (4* local standards) – Master Suite*



Sun Bay offers a perfect blend of comfort and tropical charm. Nestled amidst lush gardens, the hotel provides guests with a serene atmosphere just a short walk from the beach. The hotel boasts spacious accommodations, a large outdoor pool, a bar, and an on-site restaurant.

Hotel Sun Bay



POUSADA OKA DA MATA or similar *4* (4* local norms) – Senior room with ocean view*



The inn is located less than 150 meters from the sea, 1.3 km from the village of Pipa, facing an ecological park, and offers an unparalleled view of the sea, Dolphin Bay, and the northeastern forest. The inn has numerous wellness areas both indoors and outdoors with panoramic views of the sea. Each room is equipped with all the necessary comforts for an excellent experience in the region.

Pousada Oka da Mata

PRAIA DA PIPA SUGGESTED HOTELS



HÔTEL SOMBRA E ÁGUA FRESCA or similar

4 sup (5* local norms) – Executive room with partial ocean view*

Discover the tropical enchantment at Sombra e Água Fresca, a gem by the beach in Pipa. With elegant accommodations offering breathtaking ocean views, this establishment provides a relaxing atmosphere and quality service. Enjoy the spectacular pool, delicious regional cuisine at the hotel's restaurant, and nearby water activities. The perfect harmony of comfort, nature, and Brazilian hospitality awaits you in this coastal paradise.

Hôtel Sombra e Água Fresca

PROGRAM



Day 1: IN / PRAIA DE PIPA

- Reception by your English-speaking guide and transfer to the hotel
- Installation in the room - Available from 3:00 PM
- Meals not included
- Night at the hotel

Day 2 - 3: PRAIA DE PIPA

- Breakfast at the hotel
- Free day
- Meals not included
- Night at the hotel

Day 4: PRAIA DE PIPA / OUT

- Breakfast at the hotel
- Check out before midday
- Meals not included
- Reception by your English-speaking guide and transfer to the airport

END OF OUR SERVICES

PRICE & CONDITIONS

SERVICES	2	4	6	8	Sup SGL
PRAIA DA PIPA module 04 days / 03 nights in DBL room at Sun Bay** – <u>« starting from » rates</u>	410	330	280	265	175
PRAIA DA PIPA module 04 days / 03 nights in DBL room at Oka da Mata – <u>Low Season</u>	465	385	335	320	235
Module PRAIA DA PIPA 04 jours / 03 PRAIA DA PIPA module 04 days / 03 nights in DBL room at Oka da Mata – <u>High Season</u>	495	415	365	350	265
PRAIA DA PIPA module 04 days / 03 nights in DBL room at Sombra & Agua Fresca – <u>Low Season</u>	730	650	600	585	500
Module PRAIA DA PIPA 04 jours / 03 PRAIA DA PIPA module 04 days / 03 nights in DBL room at Sombra & Agua Fresca – <u>High Season</u>	815	740	685	675	585

**Please note that, due to the variable pricing policy of these hotels, prices start from and may vary depending on demand.

High Season (Oka da Mata)– January and July thru December

Low Season (Oka da Mata)– February thru June

High Season (Sombra e Agua Fresca)– January, February and July thru December

Low Season (Sombra e Agua Fresca)– March thru June

PRICE PER PERSON IN DOUBLE ROOM IN USD

Our rates are valid from January 02nd to 20th December 2025

These rates may increase during: Christmas, New Year's Eve, Carnival (from February 28th to March 05th), Champions Parade (from February 07th to 09th), Easter (from April 17th to 21th) or Holidays : Tiradentes : April 21th, May 01st, Corpus Christi : from June 19th to 22th, Independence day : September 7th, Aparecida : October 12th, All Saints day : November 2nd, Republic day : November 15th and Black Awareness Day : November 20th.

as well as period of special events:

Please ask for special quoting for this dates.

CIRCUIT INCLUDES

- Accommodations in double room at mentioned hotels or similar, depending on the availability at the moment of reservation.
- Breakfast at the hotel (*different buffets depending on the hotel*)
- All the fees for mentioned excursions and visits, with English-speaking guide
- Transfers, land transport in private vehicle, with English-speaking guide

CIRCUIT DOES NOT INCLUDE

- International and domestic Flights.
- International and national airport taxes: USD 36.-/pax* (Brazil)
- Beverages and personal expenses
- Tips for guides, drivers in the bars and restaurants.
- Any not mentioned or optional service
- Supplement SGL
- The price does not include the increases that could appear during the year (entrances, hotels, transportation). These increases are related to the fuel raise and the devaluation of the EUR in our local currency.

Important note: The prices of optional excursions or services indicated in this quote are only valid with the validation of the package. If your customers only wish these services "à la carte", without a hotel, these services will be subject to a 5% increase.

Please note that for all invoices under 1000 USD, bank charges of 50 EUR will be charged to the customer.

RESERVATION CONDITIONS

To confirm Brazil Sensations services, we will need to receive the following information:

- Passenger(s)'s complete name(s) as per registered in their passports
- Date of Birth,
- Passport N° with which each passenger will enter the country as well as its expiration date,
- Nationality,
- Exact information about their international flights to and from the country (numbers, time and company), their e-ticket number (this last information may be sent afterwards) as well as the same information on domestic flights, if applicable.

Brazil Sensations will reserve, according to the services agreed on common understanding, all the necessary initial reservations and will send a balance sheet in the form of a confirmation letter (OK = confirmed; WL = Waiting List ; RQ = Waiting for and Answer).

- Once we receive your confirmation, we send you a prepay invoice corresponding the requirements of certain suppliers to guarantee the reservation. (Around 20 %)
- This invoice should be paid when it is received in order to guarantee the reservations of your program
- The final invoice should be paid 30 days before the arrival date of the passengers.

We reserve the right to cancel or alter provision of the services if the invoice is not paid before the arrival date of the group to the destination; in such case, we cannot be held accountable and such actions won't justify future complaints or indemnity.

CANCELLATION

All cancellation will be received in writing only and according to the following terms:

LAND SERVICES

- If the cancellation is made 30 days prior to the arrival date, we charge USD \$ 50 per pax
- Between the 29th and 15th day prior to the arrival date, we charge 20%
- Between the 14th and 10th day prior to the arrival date, we charge 55%
- Between the 9th and 5th day prior to the arrival date, we charge 75%
- Between the 4th and 2nd day prior to the arrival date, we charge 85%
- No refund if cancellation is made as for the 4th day prior to the arrival date.
- In case of no show the 100% of full amount of the services will be charged.

Christmas, New Year's Eve and Carnival packages are non-refundable.

SPECIAL TERMS

In case of suppliers have special cancellation terms, these will be mentioned in our confirmation letter, and they will be applied strictly as the supplier do.

This proposition is valid for 45 days

Thank you!