

BRAZIL SENSATIONS

SOUTH PANTANAL MODULE

4 Days / 3 nights

YEAR 2025



CREATING EMOTIONS



Brazil Sensations a 100% green DMC

Brazil Sensations is the first Brazilian DMC to engage itself in the carbon offset of its activities.

Besides our daily gestures to minimize our impact to our planet, Brazil Sensations decided not only to be ecological and socially sustainable, but as well to reinforce the regenerative tourism.

Following a long expertise by Agroforestry Carbon, our CO2 emissions are compensated in the form of contribution to certified projects in Brazil.

In line with the UN's Sustainable Development Goals (SDGs), our actions are concentrated in reforestation, preserving forests and its biodiversity as well as renewable energy sources whilst assuring the protection of vulnerable local populations.

These days, it has become difficult to ignore the impact that our tourism projects in Brazil can have to the environment. It is in this context that Brazil Sensations offers the possibility of a solution to every project such as to propose a carbon compensation of each and every journey to our beloved country.



ENVIRONMENTAL IMPACT

- Recovery of degraded zones
- Increase in biological carbon sequestration
- Increase in the quality of the soil
- Source water protection
- Increase in biodiversity
- Increase in the area 's productivity

SOCIAL IMPACT

- Diversification of cultures and productions
- Generation of a resilient economy
- Assuring food security
- Reinforcement of local productions
- Foods with higher nutritional value
- Better quality of life to farmers



IF YOU SEE THIS SYMBOL

It means that the chose service provider applies a conscious development vision and policy, aiming to give a positive impact to society and to respect the environment.

BRAZIL SENSATIONS works in priority with these suppliers.

BRAZIL SENSATIONS

ITINERARY

DAY 1: IN / SOUTH PANTANAL

DAY 2: SOUTH PANTANAL

DAY 3: SOUTH PANTANAL

DAY 4: SOUTH PANTANAL / OUT



TRAVELING IS AS EXPERIENCE

BRAZIL IN A FEW NUMBERS



Area: 3.2 million square miles (almost the same size as US – 3.8 million square miles)

Population: 209 million inhabitants with a density of 64.7/square miles (the US has a density of 87/square miles), 84% of its population lives in urban areas and 40% of Brazilians live in cities

Economy: Brazil is the largest economy in Latin America but also the world's 8th largest GDP (Gross Domestic Product).

Official language: Brazilian Portuguese

SOUTH PANTANAL

The Pantanal is a vast alluvial plain that, for much of the year, turns into a large freshwater marsh and represents one of the largest wetland areas in the world. It constitutes the densest ecosystem on the planet, both in terms of plant and animal life, and was designated as a UNESCO World Heritage site in 2000. The region serves as a sanctuary for 650 bird species out of the 1,580 species cataloged throughout Brazil. This ecosystem is the habitat for dense populations of endangered species, such as the jaguar.



SOUTH PANTANAL SUGGESTED LODGES

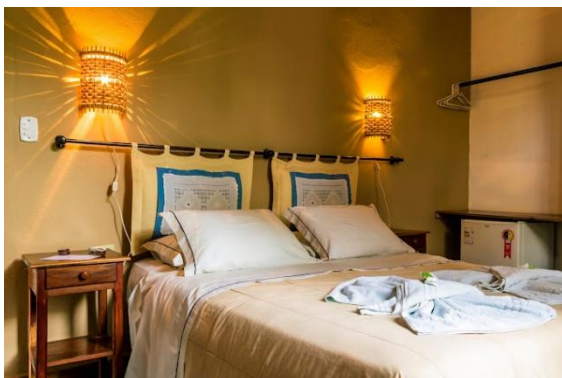


XARAÉS ECOTURISMO or similar *3* (3* local standard)*



Located in the heart of the Pantanal do Abobral, this rural hotel combines rustic charm with the comfort of spacious rooms. Pousada Xaraés offers its visitors a range of activities that enhance the experience of observing, contemplating, and immersing in Pantanal culture, as well as its nature and cuisine.

Xaraés Ecoturismo



POUSADA AGUAPÉ or similar *4* (4* local standard)*



Pousada Aguapé is located in an area of the South Pantanal rich in natural beauty and which offers several tour options for those who want to know a little more about the flora and fauna of the Pantanal. The pousada is located at 195 km from Campo Grande and has 15 apartments. A stay in this lodge is a full experience to discover the fauna, flora and gastronomy of the region. Its swimming pool, shops, gym and restaurant provide all the necessary comfort.

Pousada Aguapé

SOUTH PANTANAL SUGGESTED LODGES



CAIMAN ECOLOGICAL REFUGE or similar *4* (5* normal standard)*



The Caiman lodge is located in a true oasis of 53 thousand hectares, and was created by a conservationist passionate about nature, whose mission is to conserve the wildlife and culture of the Pantanal. The lodge offers all the structure and comfort necessary for travelers to enjoy moments of rest and contemplation of nature. The main house has 18 apartments with balconies, a charming swimming pool, a terrace with views of the bay, a sauna, a gym, lounges, and a restaurant.

Caiman Pantanal

PROGRAM



Day 1: IN / South Pantanal
340 km = 5h30 by the road

- Reception by your English-speaking guide at the airport or at the hotel in Campo Grande, and transfer to the lodge
- Check -in and Installation in the room
- First walk to discover the lodge
- Dinner at the lodge
- Night at the lodge

Day 2: South Pantanal

- Breakfast at the lodge
- Morning excursion organized by the lodge
- Lunch at the lodge
- Afternoon excursion organized by the lodge
- Dinner at the lodge
- Night at the lodge

Day 3: South Pantanal

- Breakfast at the lodge
- Morning excursion organized by the lodge
- Lunch at the lodge
- Afternoon excursion organized by the lodge
- Dinner at the lodge
- Night at the lodge

Day 4: South Pantanal / OUT

- Sunset excursion organized by the lodge
- Breakfast at the lodge
- Check-out and transfer to Campo Grande

PRICE & CONDITIONS

SERVICES	2	Sup SGL
Circuit xx days / xx night in DBL room		
RIO: Supplement XXXX		
RIO: Visit of the Sugar Loaf		
AMAZON: Boat tour		
ZERO CARBON PROJECT Supplement for the Carbon Offset of its program activities.		

PRICE PER PERSON IN DOUBLE ROOM IN USD

Valid prices from **02nd January to 20th December 2024**

These rates may increase during: Carnival (09th to 14th February), Champions Schools Parade (16th to 18th February), Easter (28th au 31th March) and National Holidays (Tiradentes : 21th April, Labor Day: 01st May, Corpus Christi : 30th May to 02nd June, Independence Day : 07th September, Our Lady of Aparecida : 12th October, All Saints Day : 02nd November, Republic Day : 15th November, and Black Awareness Day : 20th November).

And period of special events.

Please ask for special quoting for this dates.

CIRCUIT INCLUDES

- Accommodations in double or single room at mentioned hotels or similar, depending on the availability at the moment of reservation.
- Breakfast at the hotel *(different buffets depending on the hotel)*
- Meals mentioned
- All the fees for mentioned excursions and visits, with English-speaking guide
- Transfers, land transport in private vehicle, with English-speaking guide

- **CIRCUIT DOES NOT INCLUDE**

- International and domestic Flights.
- International and national airport taxes: **USD 36.-/pax*** (Brazil)
- Beverages and personal expenses
- Tips for guides, drivers in the bars and restaurants.
- Any not mentioned or optional service
- Supplement SGL
- 01 gratuity in SGL
- The price does not include the increases that could appear during the year (entrances, hotels, transportation). These increases are related to the fuel raise and the devaluation of the **USD** in our local currency.

Important note: The prices of optional excursions or services indicated in this quote are only valid with the validation of the package. If your customers only wish these services "à la carte", without a hotel, these services will be subject to a 5% increase.

Please note that for all invoices under 1000 USD / EUR, bank charges of 50 USD / EUR will be charged to the customer.

RESERVATION CONDITIONS

To confirm Brazil Sensations services, we will need to receive the following information:

- Passenger(s)'s complete name(s) as per registered in their passports
- Date of Birth,
- Passport N° with which each passenger will enter the country as well as its expiration date,
- Nationality,
- Exact information about their international flights to and from the country (numbers, time and company), their e-ticket number (this last information may be sent afterwards) as well as the same information on domestic flights, if applicable.

Brazil Sensations will reserve, according to the services agreed on common understanding, all the necessary initial reservations and will send a balance sheet in

the form of a confirmation letter (OK = confirmed; WL = Waiting List ; RQ = Waiting for and Answer).

- Once we receive your confirmation, we send you a prepay invoice corresponding the requirements of certain suppliers to guarantee the reservation. (Around 20 %)
 - This invoice should be paid when it is received in order to guarantee the reservations of your program
 - The final invoice should be paid 30 days before the arrival date of the passengers.
- We reserve the right to cancel or alter provision of the services if the invoice is not paid before the arrival date of the group to the destination; in such case, we cannot be held accountable and such actions won't justify future complaints or indemnity.*

CANCELLATION

All cancellation will be received in writing only and according to the following terms:

LAND SERVICES

- If the cancellation is made 30 days prior to the arrival date, we charge USD \$ 50 per pax
- Between the 29th and 15th day prior to the arrival date, we charge 20%
- Between the 14th and 10th day prior to the arrival date, we charge 55%
- Between the 9th and 5th day prior to the arrival date, we charge 75%
- Between the 4th and 2nd day prior to the arrival date, we charge 85%
- No refund if cancellation is made as for the 4th day prior to the arrival date.
- In case of no show the 100% of full amount of the services will be charged.

Christmas, New Year's Eve and Carnival packages are non-refundable.

SPECIAL TERMS

In case of suppliers have special cancellation terms, these will be mentioned in our confirmation letter, and they will be applied strictly as the supplier do.

This proposition is valid for 45 days

Thank you!