

BRAZIL SENSATIONS

FOZ DO IGUAÇU

2025



CREATING EMOTIONS



Brazil Sensations a 100% green DMC

Brazil Sensations is the first Brazilian DMC to engage itself in the carbon offset of its activities.

Besides our daily gestures to minimize our impact to our planet, Brazil Sensations decided not only to be ecological and socially sustainable, but as well to reinforce the regenerative tourism.

Following a long expertise by Agroforestry Carbon, our CO2 emissions are compensated in the form of contribution to certified projects in Brazil.

In line with the UN's Sustainable Development Goals (SDGs), our actions are concentrated in reforestation, preserving forests and its biodiversity as well as renewable energy sources whilst assuring the protection of vulnerable local populations.

These days, it has become difficult to ignore the impact that our tourism projects in Brazil can have to the environment. It is in this context that Brazil Sensations offers the possibility of a solution to every project such as to propose a carbon compensation of each and every journey to our beloved country.



ENVIRONMENTAL IMPACT

- Recovery of degraded zones
- Increase in biological carbon sequestration
- Increase in the quality of the soil
- Source water protection
- Increase in biodiversity
- Increase in the area 's productivity

SOCIAL IMPACT

- Diversification of cultures and productions
- Generation of a resilient economy
- Assuring food security
- Reinforcement of local productions
- Foods with higher nutritional value
- Better quality of life to farmers



IF YOU SEE THIS SYMBOL

It means that the chose service provider applies a conscious development vision and policy, aiming to give a positive impact to society and to respect the environment.

BRAZIL SENSATIONS works in priority with these suppliers.

ITINERARY

DAY 1 : Foz do Iguaçu: IN

DAY 2 : Foz do Iguaçu

DAY 3 : Foz do Iguaçu : OUT



TRAVELING IS AN EXPERIENCE

BRAZIL IN A FEW NUMBERS



Area: 3.2 million square miles (almost the same size as US – 3.8 million square miles)

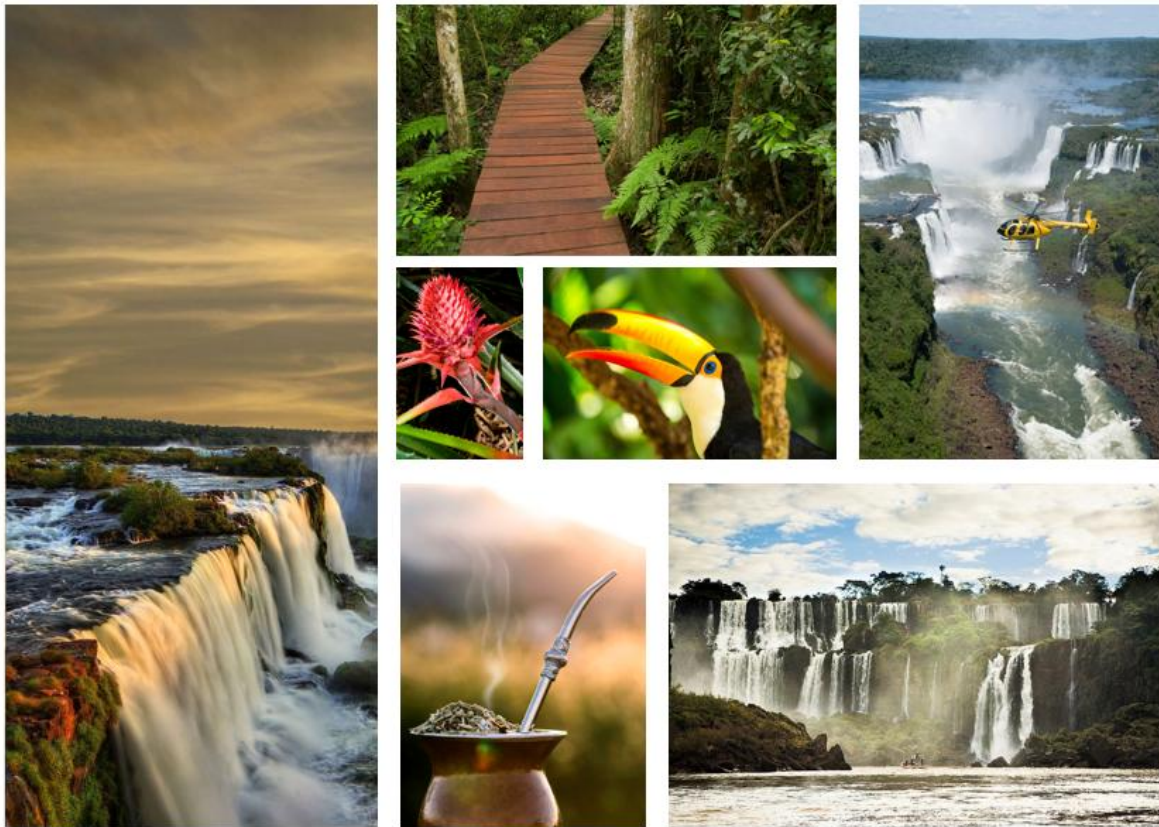
Population: 209 million inhabitants with a density of 64.7/square miles (the US has a density of 87/square miles), 84% of its population lives in urban areas and 40% of Brazilians live in cities

Economy: Brazil is the largest economy in Latin America but also the world's 8th largest GDP (Gross Domestic Product).

Official language: Brazilian Portuguese

FOZ DO IGUAÇU

Foz do Iguaçu is located at the confluence of the Iguaçu River and the Paraná River. Iguaçu means 'big waters' in Guarani. The Iguaçu Falls are a natural wonder: a collection of 275 waterfalls forming a nearly 3 km wide front. The tallest waterfall reaches 90 meters in height and is known as 'Garganta del Diablo' or 'Devil's Throat.' The entire cascade system pours up to six million liters of water per second and ranks among the most impressive in the world.



FOZ DO IGUAÇU SUGGESTED HOTELS



HOTEL CONTINENTAL INN or similar

3 (4* local standards) – room category*



Located in one of the most elegant neighborhoods of Foz do Iguaçu, this hotel offers 111 comfortable rooms and 13 suites. A swimming pool, sauna, fitness center, game room, and tennis courts are also available for its guests. Not to mention the piano bar, which offers a relaxed and distinguished evening every night.

Continental Inn



HOTEL DOUBLE TREE BY HILTON or similar

4 SUP (5* local standards) –Superior Room*

Double Tree Hotel - Foz do Iguaçu is located at 25 minutes from the famous Iguaçu Falls. New address offers a new option in this city centered around the falls, in a beautiful tropical garden. This hotel offers a very nice swimming pool and comfortable rooms. Bar and restaurant are an additional option for these guests.

DoubleTree by Hilton Foz do Iguaçu



BELMOND HOTEL DAS CATARATAS or similar

5- Superior Room*



The Hotel das Cataratas is the only hotel located in the Iguazu National Park, just a two-minute walk from the famous Iguazu Falls. Thus, it is possible for guests to go to the falls before the park opens. Its 193 rooms all have a cozy and refined decor. The hotel also offers a magnificent garden with a beautiful swimming pool, heated in the colder months and accessible until 11 p.m., tennis courts are also available.

Belmond das Cataratas

PROGRAM



Day 1 : IN / FOZ DO IGUAÇU

- Reception by your English-speaking guide at the airport and transfer to the hotel
- Check-in & installation in the room
- Dinner not included
- Night at the hotel

Day 2 : FOZ DO IGUAÇU

- Breakfast at the hotel
- Departure for the visit to the Iguazu Falls, Argentine side

In the Iguazu National Park, one of the most beautiful postcards in the world awaits – the Iguazu Falls, featuring 275 cascades that collectively pour an average of 1,400 cubic meters of water per second. Exploring the Argentine side of the park is facilitated by a small ecological train. The departure station is the park's visitor center, and it stops at two stations: "Devil's Throat," accessible after a 1300-meter walk on walkways. It's a thrilling experience to stand above the Foz and feel the power of the water. The other station, Cataratas, provides numerous walks with exceptional views of the falls.

- Lunch not included

Option: *Gran Aventura Excursion*

- Return to the hotel in the late afternoon
- Dinner not included

Option: *Dinner Show at Churrascaria Rafain.*

- Night at the hotel



Day 3 : Foz do Iguaçu / Out

- Breakfast at the hotel
- Departure for the visit to the Iguazu Falls, Brazilian side

With its 275 falls pouring, on average, 1,400 m³ of water per second, the Iguaçu National Park is accessed through the Brazilian side. Upon entering, the ride on a Panoramic Bus will cross a path of 12 km that provide beautiful views on the fauna & flora of the region. The shuttle will take you to the beginning of your 1,200 meters walking adventure, where you will be able to see the powerful falls, monkeys, birds, reptiles and, specially, the coatis : a true symbol of the Iguaçu National Park. At the end of your trek, you will be able to reach very close to the waterfall; from there, the Devil's Throat, the largest of the falls, can be seen.

- Lunch not included
- Return to the hotel in the late afternoon

Option : *Visit to the Bird Park*

- Transfer to the airport

END OF OUR SERVICES

FOZ DO IGUAÇU OPTIONS



GRAN AVENTURA EXPERIENCE

Duration : 2 additional hours



This tour is a combination of 4x4 land and boat rides. We depart from the Visitor Center at the entrance of the Park (Argentinian side) to explore approximately 8km in off-road vehicles through the jungle. This journey allows for the observation of the flora and fauna, which will be presented to you. The adventure concludes at Puerto Macuco, where we board semi-rigid boats. The 6km boat ride takes us along the lower part of the Iguazu River, approaching the falls, getting close to the smaller San Martín falls, and reaching the Devil's Throat.

FOZ DO IGUAÇU OPTION



DINNER-SHOW AT THE CHURRASCARIA RAFAIN

Duration: 3 hours

Be dazzled and impressed with over 45 artists on stage. Watch traditional folkloric dances and listen to typical songs from Brazil, Argentina, Chile, Peru, Bolivia, and Paraguay. The Rafain Churrascaria Show features tango from Argentina, traditional songs from Mexico, Andean music, and capoeira and samba from Brazil. Enjoy a delicious buffet dinner at the show. The all-you-can-eat buffet features more than 200 cold and hot dishes, including a variety of salads, traditional Brazilian dishes, other international cuisine, and a sampling of meats and desserts.

(Closed on Sundays)

FOZ DO IGUAÇU OPTIONS



VISIT TO THE BIRD PARK

Duration: 02 additional hours



Rare and colourful birds fly in the huge aviaries, built to blend in with the humid subtropical forest. Visitors are able to enter these aviaries and watch the birds at close quarters. They will also see alligators, anacondas, pythons, marmosets, and butterflies.

PRICES & CONDITIONS

SERVICES	2	4	6	8	Sup SGL
03 days / 02 nights in DBL room at Continental Inn hotel (<u>high saison</u>)	355	280	275	260	65
03 days/02 nights in DBL room at Continental Inn hotel (<u>low saison</u>)	340	265	260	250	60
03 days / 02 nights in DBL room at DoubleTree hotel (<u>high saison</u>)	475	395	390	380	140
03 days / 02 nights in DBL room at DoubleTree hotel (<u>low saison</u>)	435	360	355	345	100
03 days / 02 nights in DBL room at Belmond Cataratas hotel (<u>high saison</u>)	1145***	1055***	1050***	1030***	835***
03 days / 02 nights in DBL room at Belmond Cataratas hotel (<u>low saison</u>)	1080***	990***	985***	965***	770***
FOZ DO IGUAÇU : Gran Aventura (Visit during the visit to the falls, Argentine Coast) Included: Regular boat service	105	105	105	105	-
FOZ DO IGUAÇU : Dinner Show at Churrascaria Rafain Included: Transport, guide, and dinner show	125	110	105	95	-
FOZ DO IGUAÇU : Visit to the Bird Park (Visit during the visit to the falls, Brazilian side) Included: Ticket to Park	25	25	25	25	-

*High Season: January, February & July

*Basse Saison : March to June and August to December

PRICE PER PERSON IN DOUBLE ROOM IN USD

***Please note that, due to the variable pricing policy of these hotels, prices start from and may vary depending on demand.

Our rates are valid from January 02nd to 20th December 2025

This rates may increased during: Christmas, New Year's Eve, Carnival (from 28th of February to 05th March), Champions Parade (from 07th to 09th February), Easter (from 17th to 19th April) or Holidays : Tiradentes : April 21st, May 01st, Corpus Christi : from 19th to 22 th June, Independence day : Setemember 7th, Aparecida : October 12th, All Saints day : November 2th and Republique day : November 15th and Black Awareness Day : November 20th.

And period of special events:

Please ask for special quoting for this dates.

CIRCUIT INCLUDES

- Accommodations in double or single room at mentioned hotels or similar, depending on the availability at the moment of reservation.
- Breakfast at the hotel *(different buffets depending on the hotel)*
- All the fees for mentioned excursions and visits, with English-speaking guide
- Transfers, land transport in private vehicle, with English-speaking guide

CIRCUIT DOES NOT INCLUDE

- International and domestic Flights.
- International and national airport taxes: USD 36.-/pax* (Brazil)
- Meals, beverages and personal expenses
- Tips for guides, drivers in the bars and restaurants.
- Any not mentioned or optional service
- Supplement SGL
- 01 gratuity in SGL
- The price does not include the increases that could appear during the year (entrances, hotels, transportation). These increases are related to the fuel raise and the devaluation of the USD in our local currency.

Important note: The prices of optional excursions or services indicated in this quote are only valid with the validation of the package. If your customers only wish these services "à la carte", without a hotel, these services will be subject to a 5% increase.

Please note that for all invoices under 1000 USD, bank charges of 50 USD will be charged to the customer.

RESERVATION CONDITIONS

To confirm Brazil Sensations services, we will need to receive the following information:

- Passenger(s)'s complete name(s) as per registered in their passports
- Date of Birth,
- Passport N° with which each passenger will enter the country as well as its expiration date,
- Nationality,
- Exact information about their international flights to and from the country (numbers, time and company), their e-ticket number (this last information may be sent afterwards) as well as the same information on domestic flights, if applicable.

Brazil Sensations will reserve, according to the services agreed on common understanding, all the necessary initial reservations and will send a balance sheet in the form of a confirmation letter (OK = confirmed; WL = Waiting List ; RQ = Waiting for and Answer).

- Once we receive your confirmation, we send you a prepay invoice corresponding the requirements of certain suppliers to guarantee the reservation.

- This invoice should be paid when it is received in order to guarantee the reservations of your program

- The final invoice should be paid 30 days before the arrival date of the passengers.

We reserve the right to cancel or alter provision of the services if the invoice is not paid before the arrival date of the group to the destination; in such case, we cannot be held accountable and such actions won't justify future complaints or indemnity.

CANCELLATION

All cancellation will be received in writing only and according to the following terms:

LAND SERVICES

- If the cancellation is made 30 days prior to the arrival date, we charge USD \$ 50 per pax
- Between the 29th and 15th day prior to the arrival date, we charge 20%
- Between the 14th and 10th day prior to the arrival date, we charge 55%
- Between the 9th and 5th day prior to the arrival date, we charge 75%
- Between the 4th and 2nd day prior to the arrival date, we charge 85%
- No refund if cancellation is made as for the 4th day prior to the arrival date.
- In case of no show the 100% of full amount of the services will be charged.

Christmas, New Year's Eve and Carnival packages are non-refundable.

SPECIAL TERMS

In case of suppliers have special cancellation terms, these will be mentioned in our confirmation letter, and they will be applied strictly as the supplier do.

This proposition is valid for **45 days**

Thank you!