

# BRAZIL SENSATIONS

IRRESISTIBLE TRIO  
RIO DE JANEIRO – FOZ DO IGUAÇU -  
SALVADOR

08 days / 07 nights



CREATING EMOTIONS

---



## Brazil Sensations a 100% green DMC

Brazil Sensations is the first Brazilian DMC to engage itself in the carbon offset of its activities.

Besides our daily gestures to minimize our impact to our planet, Brazil Sensations decided not only to be ecological and socially sustainable, but as well to reinforce the regenerative tourism.

Following a long expertise by Agroforestry Carbon, our CO2 emissions are compensated in the form of contribution to certified projects in Brazil.

In line with the UN's Sustainable Development Goals (SDGs), our actions are concentrated in reforestation, preserving forests and its biodiversity as well as renewable energy sources whilst assuring the protection of vulnerable local populations.

These days, it has become difficult to ignore the impact that our tourism projects in Brazil can have to the environment. It is in this context that Brazil Sensations offers the possibility of a solution to every project such as to propose a carbon compensation of each and every journey to our beloved country.



## ENVIRONMENTAL IMPACT

- Recovery of degraded zones
- Increase in biological carbon sequestration
- Increase in the quality of the soil
- Source water protection
- Increase in biodiversity
- Increase in the area 's productivity

## SOCIAL IMPACT

- Diversification of cultures and productions
- Generation of a resilient economy
- Assuring food security
- Reinforcement of local productions
- Foods with higher nutritional value
- Better quality of life to farmers



## IF YOU SEE THIS SYMBOL

It means that the chose service provider applies a conscious development vision and policy, aiming to give a positive impact to society and to respect the environment.

**BRAZIL SENSATIONS** works in priority with these suppliers.

## ITINERARY

DAY 1: IN: RIO DE JANEIRO

DAY 2: RIO DE JANEIRO

DAY 3: RIO DE JANEIRO

DAY 4: RIO DE JANEIRO / FOZ DO IGUAÇU

DAY 5: FOZ DO IGUAÇU

DAY 6: FOZ DO IGUAÇU / SALVADOR

DAY 7: SALVADOR

DAY 8: SALVADOR: OUT



TRAVELING IS AS EXPERIENCE

---



## BRAZIL IN A FEW NUMBERS



**Area:** 3.2 million square miles (almost the same size as US – 3.8 million square miles)

**Population:** 209 million inhabitants with a density of 64.7/square miles (the US has a density of 87/square miles), 84% of its population lives in urban areas and 40% of Brazilians live in cities

**Economy:** Brazil is the largest economy in Latin America but also the world's 8th largest GDP (Gross Domestic Product).

**Official language:** Brazilian Portuguese

## RIO DE JANEIRO

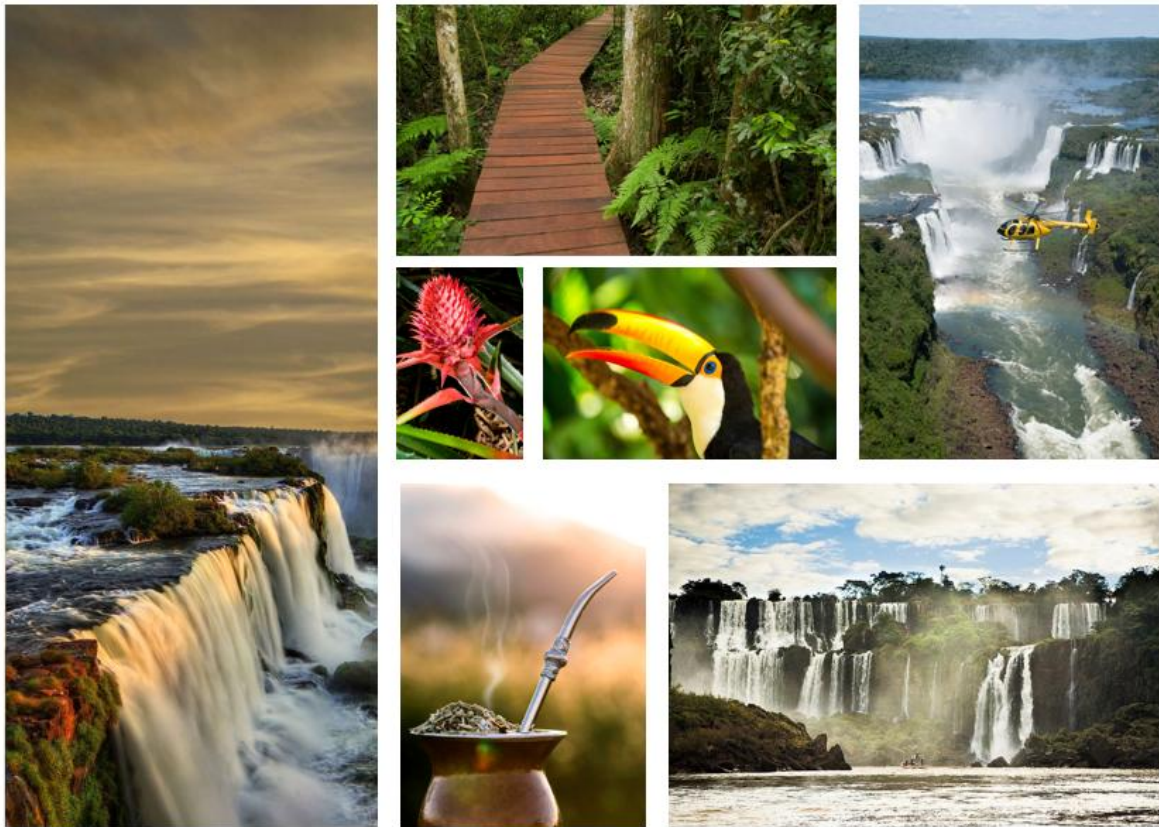
Rio de Janeiro is usually referred as the marvelous city. Locked between sea and mountains covered by exuberant vegetations, this city surprises with its many incredible sceneries, its cultural diversity and the lively, festive, spirit from cariocas - the carnival is an emblematic representation of this.

It is one of the country's main economic, cultural, and financial centers, and is internationally renowned for its cultural icons, such as the statue of Christ the Redeemer (one of the Seven Wonders of the Modern World).



## FOZ DO IGUAÇU

Foz do Iguaçu is located at the confluence of the Iguaçu River and the Paraná River. Iguaçu means 'big waters' in Guarani. The Iguaçu Falls are a natural wonder: a collection of 275 waterfalls forming a nearly 3 km wide front. The tallest waterfall reaches 90 meters in height and is known as 'Garganta del Diablo' or 'Devil's Throat.' The entire cascade system pours up to six million liters of water per second and ranks among the most impressive in the world.





# SALVADOR

Salvador is also known as Brazil's capital of happiness due to its countless popular outdoor parties, including its street carnival. The first colonial capital of Brazil, the city is one of the oldest in the Americas. The African influence in many cultural aspects of the city makes it the centre of Afro-brazilian culture. The historical centre of Salvador, frequently called Pelourinho, is renowned for its Portuguese colonial architecture with historical monuments dating from the 17th to the 19th centuries and was declared a Worlds Heritage Site by UNESCO in 1985.





## RIO DE JANEIRO SUGGESTED HOTELS

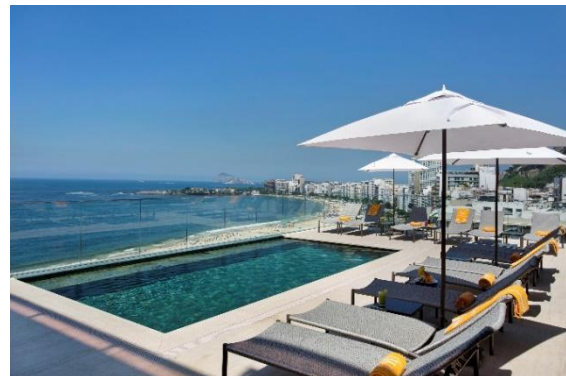
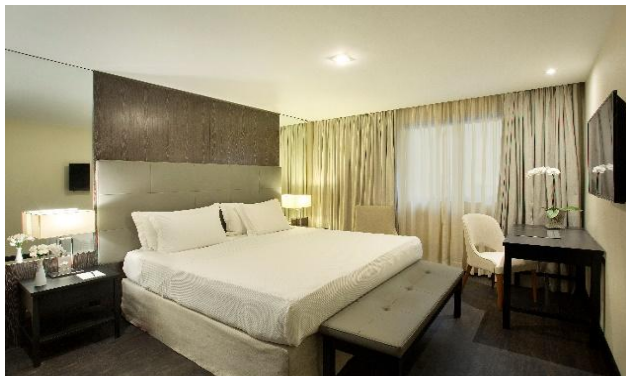


### **WINDSOR MARTINIQUE or similar** *3\*(4\* local standards) - category room*



A few steps from Copacabana Beach, and close to Ipanema Beach, this hotel features 116 comfortable rooms and a pool to enjoy the beautiful beach view.

*Hôtel Windsor Martinique*



### **HOTEL WINDSOR CALIFORNIA or similar** *4\* SUP - Superior Room*



Located in the heart of Copacabana, in front of the ocean, you will be welcomed with an outstanding stay: the hotel offers an excellent structure and many services (bars, restaurants, sauna, gym, ...), as well as a swimming pool with panoramic view.

*Windsorcalifornia*



**HOTEL MIRAMAR BY WINDSOR or similar**

*5\* (5\* local standards) – Superior Room*



Located facing Copacabana Beach, this hotel has managed to preserve its Art Deco style, which was very fashionable at the birth of this neighborhood. Charm and comfort await you to savor this magical place! You will be offered an exclusive service, profit from an excellent stay and an amazing panoramic view in front of the sea and besides a seamless pool and a rooftop bar, as well as other benefits. All the rooms are treated with the best of comfort and modernism – a rich and sophisticated 5 stars experience.

*Miramar by Windsor*



## FOZ DO IGUAÇU SUGGESTED HOTELS



### **HOTEL CONTINENTAL INN or similar**

*3\* (4\* local standards) – room category*



Located in one of the most elegant neighborhoods of Foz do Iguaçu, this hotel offers 111 comfortable rooms and 13 suites. A swimming pool, sauna, fitness center, game room, and tennis courts are also available for its guests. Not to mention the piano bar, which offers a relaxed and distinguished evening every night.

*Continental Inn*

---



### **HOTEL DOUBLE TREE BY HILTON or similar**

*4\* SUP (5\* local standards) –Superior Room*

Double Tree Hotel - Foz do Iguaçu is located at 25 minutes from the famous Iguaçu Falls. New address offers a new option in this city centered around the falls, in a beautiful tropical garden. This hotel offers a very nice swimming pool and comfortable rooms. Bar and restaurant are an additional option for these guests.

*DoubleTree by Hilton Foz do Iguaçu*





## BELMOND HOTEL DAS CATARATAS or similar

*5\*- Superior Room*



The Hotel das Cataratas is the only hotel located in the Iguazu National Park, just a two-minute walk from the famous Iguazu Falls. Thus, it is possible for guests to go to the falls before the park opens. Its 193 rooms all have a cozy and refined decor. The hotel also offers a magnificent garden with a beautiful swimming pool, heated in the colder months and accessible until 11 p.m., tennis courts are also available.

*Belmond das Cataratas*

## SALVADOR SUGGESTED HOTELS

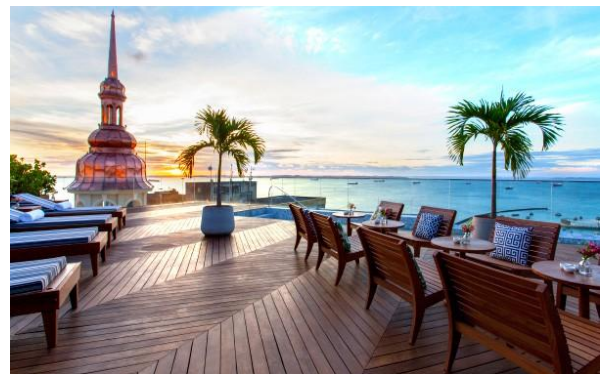


**POUSADA DO PILAR or similar**  
*3\* (local regulation) – Classic room*



Pousada do Pilar is a vintage house dating from the end of the 19th century, located in the historic Center of Salvador. The building has preserved walls of that time, as well as an old school decoration to recall the Nordestinos spirit. The rooms have a view either of the old town or the Baia de Todos os Santos. Breakfast is served on the rooftop, where you will enjoy a splendid view of the Bay.

*Pousada do Pilar*



**FERA PALACE or similar**

*4\* (local regulation) – Deluxe Room*



Situated in the heart of the Historical center, the **Fera Palace Salvador** is a handpicked option offering Art Deco style suites. The rooftop has a pool and a beautiful view to the Bay of All Saints. Its 71 rooms and 10 suites offer comfort amidst an unique aura.

*Hôtel Fera Palace*



## BRAZIL SENSATIONS



### **FASANO SALVADOR or similar**

*5 \* (local regulation) – Deluxe room*

Fasano, a Brazilian brand known for its luxury hotels and restaurants, has decided to open its doors in Salvador, thus offering the first capital of Brazil a prestigious address! This hotel is primarily a historic building, classified as a heritage site in the city, located in the historic center, on Castro Alves Square. On the top floor, there is a beautiful pool and a magnificent view of the Bay of All Saints.

*Fasano Salvador*



# PROGRAM



## Day 1: RIO DE JANEIRO / IN

- Reception by your English-speaking guide and transfer to the hotel
- Installation in the hotel – room available from 15 p.m
- Day at leisure
- Meals not included
- Night at the hotel

## Day 2: RIO DE JANEIRO

- Breakfast at the hotel
- Day at leisure
- Meals not included

*Option: Ascend to Corcovado by train*

*Option: Ascent of the Sugarloaf Mountain*

*Option: Cooking Class*

*Option: Samba class at Carlinhos de Jesus' school*

*Option: Internal Visit of the Maracanã*

*Option: Art Tour*

*Option: Visit to the Botanical Garden*

*Option: Trek in the Tijuca Forest*

*Option: Visite of Santa Teresa*

*Option: Night at Rio Scenarium*

*Option: Guided tour of the historic center*

*Option: Discovery and meeting with a community*

- Night at the hotel



### Day 3: RIO DE JANEIRO

- Breakfast at the hotel
- Day at leisure
- Lunch and dinner not included
- Night at the hotel

### Day 4: RIO DE JANEIRO / FOZ DO IGUAÇU

- Breakfast at the hotel
- Check-out and transfer to the airport
- Reception by your English-speaking guide at the airport and transfer to the hotel
- Check-in & installation in the room
- Meals not included
- Night at the hotel

### Day 5: FOZ DO IGUAÇU

- Breakfast at the hotel
- Departure for the visit to the Iguazu Falls, Argentine side

In the Iguazu National Park, one of the most beautiful postcards in the world awaits – the Iguazu Falls, featuring 275 cascades that collectively pour an average of 1,400 cubic meters of water per second. Exploring the Argentine side of the park is facilitated by a small ecological train. The departure station is the park's visitor center, and it stops at two stations: "Devil's Throat," accessible after a 1300-meter walk on walkways. It's a thrilling experience to stand above the Foz and feel the power of the water. The other station, Cataratas, provides numerous walks with exceptional views of the falls.

- Lunch not included

**Option:** *Gran Aventura Excursion*



- Return to the hotel in the late afternoon
- Dinner not included

**Option:** *Dinner Show at Churrascaria Rafain.*

- Night at the hotel

#### **Day 6: FOZ DO IGUAÇU / SALVADOR**

- Breakfast at the hotel
- Departure for the visit to the Iguazu Falls, Brazilian side

With its 275 falls pouring, on average, 1,400 m<sup>3</sup> of water per second, the Iguazu National Park is accessed through the Brazilian side. Upon entering, the ride on a Panoramic Bus will cross a path of 12 km that provide beautiful views on the fauna & flora of the region. The shuttle will take you to the beginning of your 1,200 meters walking adventure, where you will be able to see the powerful falls, monkeys, birds, reptiles and, specially, the coatis : a true symbol of the Iguazu National Park. At the end of your trek, you will be able to reach very close to the waterfall; from there, the Devil's Throat, the largest of the falls, can be seen.

- Lunch not included
- Return to the hotel in the late afternoon

**Option :** *Visit to the Bird Park*

- Transfer to the airport
- Reception by your English-speaking guide at the airport and transfer to the hotel
- Check-in & installation in the room
- Night at the hotel

#### **Day 7: SALVADOR**





- Breakfast at the hotel
- Historical District visit (the Pelourinho)

The Pelourinho district is the historical centre of the city: it holds an ensemble of colonial baroque architecture classified as a Cultural Heritage by UNESCO. It was a high-class neighbourhood until the beginning of the 20<sup>th</sup> century, and it's the site of the convent of São Francisco, built between the 17<sup>th</sup> and 18<sup>th</sup> century. This district is also the foothold of the living culture of Bahia.

*Optional : Visit to the Lower City*

*Optional : Culinary Class on Bahiana Cuisine with Lunch*

*Optional : Mysteries of Candomblé*

*Optional : Percussion Class*

*Optional : Capoeira Class*

- Return to the hotel
- Meals not included

*Optional : Salvador by Night : Miguel Santana's folkloric ballet*

- Night at the hotel

## Day 8 : SALVADOR / OUT

- Breakfast at the hotel
- Check-out at 12h00 and transfer to the airport

*Optional : Extension to discover the Praia do Forte in Bahia (it follows attached)*

*Optional : Extension to discover the Morro de São Paulo in Bahia (it follows attached)*

*Optional : Extension to discover the State of Manaus and Amazonia (it follows attached)*

## RIO DE JANEIRO OPTIONS



### VISIT OF THE CORCOVADO

*Duration: 4 hours*



Corcovado is a 710-meter-high granite peak located in the Tijuca Forest, offering a privileged view of the city of Rio de Janeiro and Guanabara Bay. It is famous for being home to the Christ the Redeemer statue, one of the main symbols of the city and the country. The Corcovado railway line, starting from the Cosme Velho station, was inaugurated in 1884. With a length of 3,824 meters, it was the country's first railway built exclusively for tourist purposes. The train, older than the statue itself, transported the necessary pieces for its construction during the four years of work. In 1910, this railway line became the first in Brazil to be electrified, and the old steam trains were replaced by electric machines.

## RIO DE JANEIRO OPTIONS



### ASCENSION OF THE SUGAR LOAF

*Duration : 4 hours*



The ascension of the Sugarloaf Mountain is done by cable car in two stages: the first journey takes you to Mount Urca, where you can already enjoy a breathtaking view of the city. On the second cable car, you'll arrive at the summit of Sugarloaf. This name evokes the refined sugar blocks placed in clay molds for transport by boat during the sugarcane trade era. However, it's possible that this explanation is just a popular etymology, and the name may actually derive from the Tupi-Guarani language, "Pau-nh-acuqua," which means "great hill" in English. This peak, a monolithic granite block, is the only one among all the city's peaks to rise directly from the seaside. It is located on a peninsula at the entrance to Guanabara Bay.



## RIO DE JANEIRO OPTIONS



### INTERACTIVE DINNER: MASTERCLASS IN BRAZILIAN CUISINE

*Duration : 4 hours*



Delve into one of the mains aspects of the Brazilian culture: the Food ! Have a cooking class in Rio de Janeiro and learn how to prepare the best of the local meals. Taste Brazilian flavours and discover regional cooking techniques. You will learn many traditional recipes that you can enjoy any time!

In the menu: 03 course menu, caipirinhas and a lot of fun!

## RIO DE JANEIRO OPTIONS



### SAMBA CLASSES AT THE SCHOOL OF THE GREAT CARLINHOS DE JESUS

Considered the best and greatest Samba dancer, Carlinhos de Jesus is among the legends of Brazil. After having spanned different eras and generations, samba and the world of carnival hold no secrets for him. He has opened a school in the Botafogo neighborhood where his hand-picked troupe offers samba and percussion lessons.

## RIO DE JANEIRO OPTIONS



### VISIT OF THE MARACAÑA STADIUM

*Duration: 2 hours*

The temple of football, the stadium was built for the FIFA World Cup, Brazil 1950, and immortalized by one of the most memorable moments in the history of the tournament - the unforgettable final between Brazil and Uruguay. For the 2014 FIFA World Cup, Maracanã underwent a major renovation. What was once known as "the largest stadium in the world," sometimes hosting over 200,000 spectators, has now reduced its capacity to 73,531 spectators...



## RIO DE JANEIRO OPTIONS



### ART TOUR IN RIO: A JOURNEY INTO THE HEART OF CREATION

Duration: 6 hours



Discover art in all its forms with this 6-hour tour in Rio de Janeiro. Begin with an immersive visit to Fábrica Bhering, a former industrial complex transformed into artists' studios. Then, dive into the vibrant world of street art with a guided tour of the city's most iconic graffiti. Finally, conclude your adventure in a contemporary art gallery in Ipanema, featuring an exhibition that highlights a Brazilian artist and showcases works by the greatest Brazilian and international artists. An unforgettable artistic journey in the heart of Rio!

## RIO DE JANEIRO OPTIONS



### VISITE OF THE BOTANIC GARDEN

*Duration: 4 hours*



Considered one of the world's best tropical botanical gardens, this peaceful haven is home to rare specimens of Brazilian flora as well as plants from other countries. It is also a highly regarded spot for numerous species of tropical birds. Established in 1808, it covers an area of 137 hectares. The garden is divided into several sections (Japanese, sensory, tropical, cactus). Listen closely! If you hear branches cracking, it's because monkeys are overhead.



## RIO DE JANEIRO OPTIONS



### TIJUCA FOREST HIKE

*Duration: 4 hours*



Tijuca Forest is a reforested mountainous region located in the city of Rio de Janeiro. It is considered the largest urban forest in the world, covering an area of 32 km<sup>2</sup>. Your French-speaking guide will pick you up at the hotel at 8:00 AM. Private transportation (about 30 minutes) to Tijuca Forest. Stops at the viewpoints of Mesa do Imperador and Vista Chinesa, then at Taunay Waterfall. Entrance to the park through the visitor center, followed by transportation to the starting point of the hike. Hike to Pico da Tijuca, approximately 1 hour and 40 minutes round trip (medium difficulty).



## RIO DE JANEIRO OPTIONS



### VISIT OF THE SANTA TERESA NEIGHBORHOOD

*Duration: 4 hours*

The Santa Teresa neighborhood was built around the convent of the same name in the 18th century. It was inhabited by the bourgeoisie of the time and was one of the first expansions of the city. Houses inspired by French architecture were constructed in the area, and some of them still stand today. In 1872, the "bonde," a tramway, arrived, which became a symbol of the neighborhood. Since 1896, the bonde has allowed people to reach the city center by passing over the Lapa arches, a disused aqueduct.

## RIO DE JANEIRO OPTIONS



### VISIT OF THE SANTA TERESA NEIGHBORHOOD

*Duration: 4 hours*

The Santa Teresa neighborhood was built around the convent of the same name in the 18th century. It was inhabited by the bourgeoisie of the time and was one of the first expansions of the city. Houses inspired by French architecture were constructed in the area, and some of them still stand today. In 1872, the "bonde," a tramway, arrived, which became a symbol of the neighborhood. Since 1896, the bonde has allowed people to reach the city center by passing over the Lapa arches, a disused aqueduct.



## RIO DE JANEIRO OPTIONS



### DISCOVERING THE HISTORICAL CITY CENTER

Duration: 4h



The center of Rio, despite some residential buildings, is mostly a commercial and tourist area home to the largest concentration of financial institutions. Historic buildings share this space with modern skyscrapers. In addition to its countless churches, this district has a rich historical heritage marking the colonial, imperial, republican and contemporary styles, such as the Capanema building designed by Corbusier, Niemeyer and Lucio Costa. A time travelling trip !



## RIO DE JANEIRO OPTIONS



### MEETING AT THE CHAPÉU-MANGUEIRA COMMUNITY

*Duration : 4 hours*



Located on a hillside, this favela is situated in the Copacabana neighborhood and was the opening scene of Marcel Camus' film "Black Orpheus." It is a small community with 3,000 residents. You will stroll through the winding alleyways of the favela and have the opportunity to admire Copacabana Beach, Sugarloaf Mountain, and Corcovado from different angles. It was pacified in 2009, meaning it is no longer under the control of traffickers. To access the community (located on a hillside), clients will use mototaxis that the community residents themselves use (ride time: 2 minutes)

## FOZ DO IGUAÇU OPTIONS



### GRAN AVENTURA EXPERIENCE

*Duration : 2 additional hours*



This tour is a combination of 4x4 land and boat rides. We depart from the Visitor Center at the entrance of the Park (Argentinian side) to explore approximately 8km in off-road vehicles through the jungle. This journey allows for the observation of the flora and fauna, which will be presented to you. The adventure concludes at Puerto Macuco, where we board semi-rigid boats. The 6km boat ride takes us along the lower part of the Iguazu River, approaching the falls, getting close to the smaller San Martín falls, and reaching the Devil's Throat.



## FOZ DO IGUAÇU OPTION



### DINNER-SHOW AT THE CHURRASCARIA RAFAIN

*Duration: 3 hours*

Be dazzled and impressed with over 45 artists on stage. Watch traditional folkloric dances and listen to typical songs from Brazil, Argentina, Chile, Peru, Bolivia, and Paraguay. The Rafain Churrascaria Show features tango from Argentina, traditional songs from Mexico, Andean music, and capoeira and samba from Brazil. Enjoy a delicious buffet dinner at the show. The all-you-can-eat buffet features more than 200 cold and hot dishes, including a variety of salads, traditional Brazilian dishes, other international cuisine, and a sampling of meats and desserts.

**(Closed on Sundays)**



## FOZ DO IGUAÇU OPTIONS



### VISIT TO THE BIRD PARK

*Duration: 02 additional hours*



Rare and colourful birds fly in the huge aviaries, built to blend in with the humid subtropical forest. Visitors are able to enter these aviaries and watch the birds at close quarters. They will also see alligators, anacondas, pythons, marmosets, and butterflies.

## SALVADOR OPTIONALS



### VISIT TO THE LOWER CITY

*Duration : 6 hours*



The Nosso Senhor do Bonfim Church, where the famous Bonfim ribbons are distributed, is one of the most traditional churches dedicated to the patron saint of Bahians and symbol of the religious syncretism of the state. Each year, the washing of the stairs of the Church of Bonfim, gives rise to a great celebration. This experience takes you to pay a visit to the Mercado Modelo, inaugurated on December 9, 1912, which at the time offered a wide choice of fruits, vegetables, meats, flour, etc. Today it is the largest artisanal market in northeastern Brazil.

Lunch at a local restaurant.

## SALVADOR OPTIONALS



### CULINARY CLASS ON BAHIANA CUISINE WITH LUNCH

*Duration : max 04 hours*



How about getting to know a bit of Bahian culture through gastronomy? This proposal takes place in the workshop of a Bahian visual artist. It includes the participation of guests in preparing a rich and flavorful lunch, with an appetizer, main course, and dessert for the small group participating in the class.

Included are 01 water, 01 fruit juice, and 01 espresso per person.



## SALVADOR OPTIONALS



### Percussion Class

*Duration : 01 hour*

A percussion course offers an immersion in Brazilian musical culture. Students learn the rhythms of samba-reggae and capoeira. Supervised by local musicians, they discover traditional techniques and the history of the instruments. It is an enriching experience that combines learning and practice

## SALVADOR OPTIONALS



### CAPOEIRA CLASS

*Duration: 01 hours*

Capoeira is an Afro-Brazilian martial art that is believed to have its roots in the combat techniques and dances of African peoples during the time of slavery in Brazil. It distinguishes itself from other martial arts through its playful and often acrobatic nature. The feet are widely used during combat, although other parts of the body can be employed, such as the hands, head, knees, and elbows. The "players" can support or balance themselves on their hands to perform kicks or acrobatics. In various forms, capoeira is played and/or fought at different levels on the ground and at different speeds, usually accompanied by instruments, songs, and clapping.

## SALVADOR OPTIONALS



### SALVADOR BY NIGHT : MIGUEL SANTANA'S FOLKLORIC BALLET

*Duration : 4 hours*



Located in Pelourinho, the Miguel Santana folk theater opened in 1988 and is considered the only dance company dedicated to folklore in Brazil. On several occasions, this troupe of dancers has won internationally renowned prizes. After the show, dine at a local restaurant in the historic center.

*The folkloric ballet is opened on Mondays, Wednesdays and Fridays.*



## PRICE & CONDITIONS

SERVICES	2	4	6	8	Sup SGL
Circuit 08 days / 07 nights in DBL room – <b>Windsor Martinique, Continental Inn, Pousada do Pilar – Low season</b> (Price per person in USD)	840	710	650	630	190
Circuit 08 days / 07 nights DBL room – <b>Windsor Martinique, Continental Inn, Pousada do Pilar – High season</b> (Price per person in USD)	865	735	680	655	210
Circuit 08 days / 07 nights DBL room – <b>Windsor California, Double Tree by Hilton, Fera Palace – Low season</b> (Price per person in USD)	1225	1095	1035	1015	550
Circuit 08 days / 07 nights in DBL room – <b>Windsor California, Double Tree by Hilton, Fera Palace – High season</b> (Price per person in USD)	1300	1170	1115	1090	620
Circuit 08 days / 07 nights in DBL room – <b>Windsor Miramar, Belmonde Cataratas, Hotel Fasano – Low season</b> (Price per person in USD)	2585	2460	2400	2375	1965
Circuit 08 days / 07 nights in DBL room – <b>Windsor Miramar, Belmonde Cataratas, Hotel Fasano – High season</b> (Price per person in USD)	3150	3020	2965	2940	2530
<b>Option Rio: Corcovado tour</b> (Price per person in USD) Included: Transport, guide	115	90	70	60	-
<b>Option Rio: Ascent of the Sugarloaf Mountain</b> (Price per person in USD) Included: Transport, guide	125	100	80	70	-
<b>Option Rio: Cooking Class</b> (Price per person in USD) Included: Transport, guide	320	160	145	135	-
<b>Option Rio: Samba Class at Carlinhos de Jesus school</b> (Price per person in USD) Included: Transport, guide	115	80	60	50	-
<b>Option Rio: Art Tour</b>	125	75	80	50	-

## BRAZIL SENSATIONS

(Price per person in USD) Included: Transport, guide					
<b>Option Rio:</b> Visit of the Maracanã Stadium (Price per person in USD) Included: Transport, guide	110	75	55	50	-
<b>Option Rio:</b> Visit to the Botanic Garden (Price per person in USD) Included: Transport, guide	100	75	55	50	-
<b>Option Rio:</b> Trek in the Tijuca Forest (Price per person in USD) Included: Transport, guide	120	70	50	65	-
<b>Option Rio:</b> Visite of Santa Teresa (Price per person in USD) Included: Transport, guide	80	55	40	30	-
<b>Option Rio:</b> Night at Rio Scenarium (Price per person in USD) Included: Transport, guide	110	65	50	40	-
<b>Option Rio:</b> Guided tour at the historical city center (Price per person in USD) Included: Transport, guide	80	55	40	30	-
<b>Option Rio:</b> Discovering and meeting a community (Price per person in USD) Included: Transport, guide	90	60	45	35	-
<b>Option Foz do Iguaçu:</b> Gran Aventura (Visit during the visit to the falls, Argentine Coast) (Price per person in USD) Included: Regular boat service	105	105	105	105	-
<b>Option Foz do Iguaçu:</b> Dinner Show at Churrascaria Rafain (Price per person in USD) Included: Transport, guide, and dinner show	125	110	105	95	-
<b>Option Foz do Iguaçu:</b> Visit to the Bird Park (Visit during the visit to the falls, Brazilian side) (Price per person in USD) Included: Ticket to Park	25	25	25	25	-
<b>Option Salvador:</b> Visit to the Lower City (Price per person in USD) English-speaking guide and transportation included.	70	55	40	40	-



## BRAZIL SENSATIONS

<b>Option Salvador:</b> Culinary Class on Bahiana cuisine with lunch (Price per person in USD) English-speaking guide and transportation included. Lunch included.	300	240	215	215	-
<b>Option Salvador:</b> Percussion Class (Price per person in USD) English-speaking guide included	85	65	60	60	-
<b>Option Salvador:</b> CAPOEIRA CLASS (Price per person in USD) English-speaking guide included	80	60	55	55	-
<b>Option Salvador:</b> Salvador by Night: Miguel Santana's folkloric ballet (Price per person in USD) English-speaking guide and transportation included	105	90	70	70	-

*\*\*\*High Season Rio de Janeiro (March, September, October, November, December except holidays and big events)*

*\*\*\*Low Season Rio de Janeiro (April to August and Beginning of December except holidays and big events)*

*\*\*\*High Season Foz do Iguaçu (January, July and December except Holidays and Big Events)*

*\*\*\*Low Season Foz do Iguaçu (From February to June and from August to November except Holidays and Big Events)*

*\*\*\*High Season Salvador (Except Holidays and Big Events)*

*\*\*\*Low Season Salvador (Except Holidays and Big Events)*

**Our rates are valid from January 02<sup>nd</sup> to 20<sup>th</sup> December 2025**

This rates may increased during: Christmas, New Year's Eve, Carnival (from 28<sup>th</sup> of February to 05<sup>th</sup> March), Champions Parade (from 07<sup>th</sup> to 09<sup>th</sup> February), Easter (from 17<sup>th</sup> to 19<sup>th</sup> April) or Holidays : Tiradentes : April 21<sup>st</sup>, May 01<sup>st</sup>, Corpus Christi : from 19<sup>th</sup> to 22<sup>th</sup> June, Independence day : September 7<sup>th</sup>, Aparecida : October 12<sup>th</sup>, All Saints day : November 2<sup>th</sup> and Republic day : November 15<sup>th</sup> and Black Awareness Day : November 20<sup>th</sup>.

And period of special events:

Please ask for special quoting for this dates.

### CIRCUIT INCLUDES

- Accommodations in double or single room at mentioned hotels or similar, depending on the availability at the moment of reservation.
- Breakfast at the hotel *(different buffets depending on the hotel)*
- Meals mentioned
- All the fees for mentioned excursions and visits, with English-speaking guide
- Transfers, land transport in private vehicle, with English-speaking guide

## CIRCUIT DOES NOT INCLUDE

- International and domestic Flights.
- International and national airport taxes: USD 36.-/pax\* (Brazil)
- Beverages and personal expenses
- Tips for guides, drivers in the bars and restaurants.
- Any not mentioned or optional service
- Supplement SGL
- 01 gratuity in SGL
- The price does not include the increases that could appear during the year (entrances, hotels, transportation). These increases are related to the fuel raise and the devaluation of the USD in our local currency.

**Important note:** The prices of optional excursions or services indicated in this quote are only valid with the validation of the package. If your customers only wish these services "à la carte", without a hotel, these services will be subject to a 5% increase.

Please note that for all invoices under 1000 USD, bank charges of 50 USD will be charged to the customer.

## RESERVATION CONDITIONS

To confirm Brazil Sensations services, we will need to receive the following information:

- Passenger(s)'s complete name(s) as per registered in their passports
- Date of Birth,
- Passport N° with which each passenger will enter the country as well as its expiration date,
- Nationality,
- Exact information about their international flights to and from the country (numbers, time and company), their e-ticket number (this last information may be sent afterwards) as well as the same information on domestic flights, if applicable.

Brazil Sensations will reserve, according to the services agreed on common understanding, all the necessary initial reservations and will send a balance sheet in the form of a confirmation letter (OK = confirmed; WL = Waiting List ; RQ = Waiting for and Answer).

- Once we receive your confirmation, we send you a prepay invoice corresponding the requirements of certain suppliers to guarantee the reservation. (Around 20 %)

- This invoice should be paid when it is received in order to guarantee the reservations of your program

- The final invoice should be paid 30 days before the arrival date of the passengers.

*We reserve the right to cancel or alter provision of the services if the invoice is not paid before the arrival date of the group to the destination; in such case, we cannot be held accountable and such actions won't justify future complaints or indemnity.*



## CANCELLATION

All cancellation will be received in writing only and according to the following terms:

## LAND SERVICES

- If the cancellation is made 30 days prior to the arrival date, we charge USD \$ 50 per pax
- Between the 29th and 15th day prior to the arrival date, we charge 20%
- Between the 14th and 10th day prior to the arrival date, we charge 55%
- Between the 9th and 5th day prior to the arrival date, we charge 75%
- Between the 4th and 2nd day prior to the arrival date, we charge 85%
- No refund if cancellation is made as for the 4th day prior to the arrival date.
- In case of no show the 100% of full amount of the services will be charged.

Christmas, New Year's Eve and Carnival packages are non-refundable.

## SPECIAL TERMS

In case of suppliers have special cancellation terms, these will be mentioned in our confirmation letter, and they will be applied strictly as the supplier do.

This proposition is valid for 45 days

Thank you!